

# ESSEX

## SAFE STREETS 4 ALL



### Community Meeting

February 27/March 4, 2025



# Project Team and Introductions



County Planner  
**David Antonio**



City Planner  
**Alycia Cohen**



Project Manager, Planning Lead  
**Peter Kremer, AICP, PP**



Community Engagement  
**Courtenay Mercer, AICP, PP**



Equity, High Injury Network,  
Crash and Safety Analysis  
**Carlos Bastida**



# Today's Agenda

- 1. Introductions**
- 2. Project & Safe Streets for All Overview**
- 3. Equity and Safety Analysis**
- 4. Next Steps**
- 5. Discussion**



# Discussion

- **What's working?**
- **What could be improved?**
- **Vision for the future...**

***What's your vision for getting around Essex County safely in the future?***



# Safe Streets for All Action Plan

**Essex County, in collaboration with the City of East Orange, is initiating the Essex Safe Streets for All (SS4A) Action Plan Project to improve roadway safety throughout the County.**



Reduce the number of roadway fatalities and serious injuries within Essex County



Enhance safety, mobility, and quality of life for all roadway users – bicyclists, pedestrians, motorists, transit users, and people of all ages and abilities



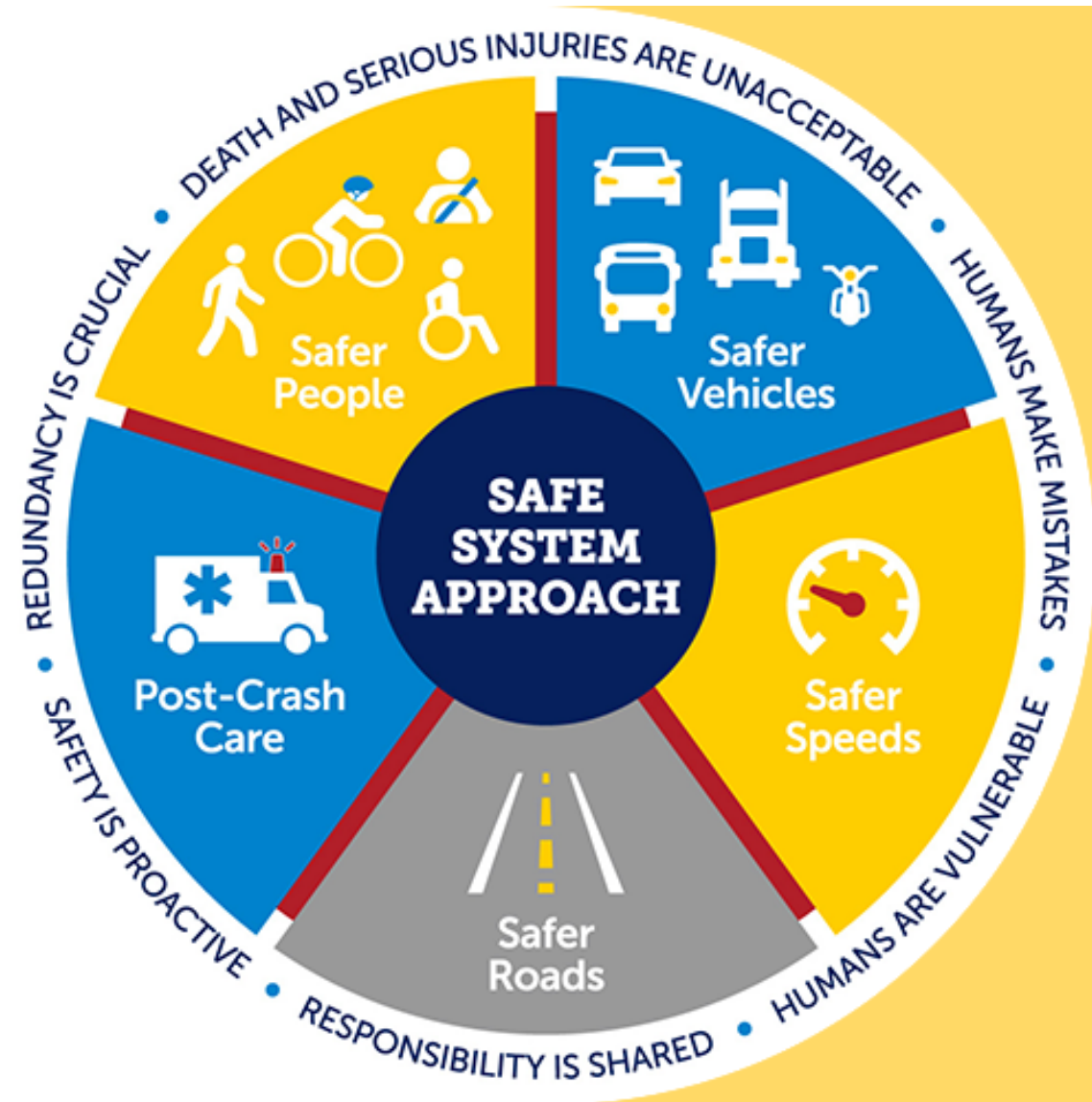
Develop a Safety Action Plan with a list of strategies and priority projects



# Safe System Approach - Principles

**USDOT has adopted the Safe System Approach as the guiding framework to address roadway safety:**

- Design for human mistakes/limitations
- Prevent deaths and serious injuries
- Shared responsibility among stakeholders
- Proactively identify and address safety risks
- Redundancy is critical



# 5 Elements of Safe System Approach



**Safer Road Users**



**Safer Vehicles**



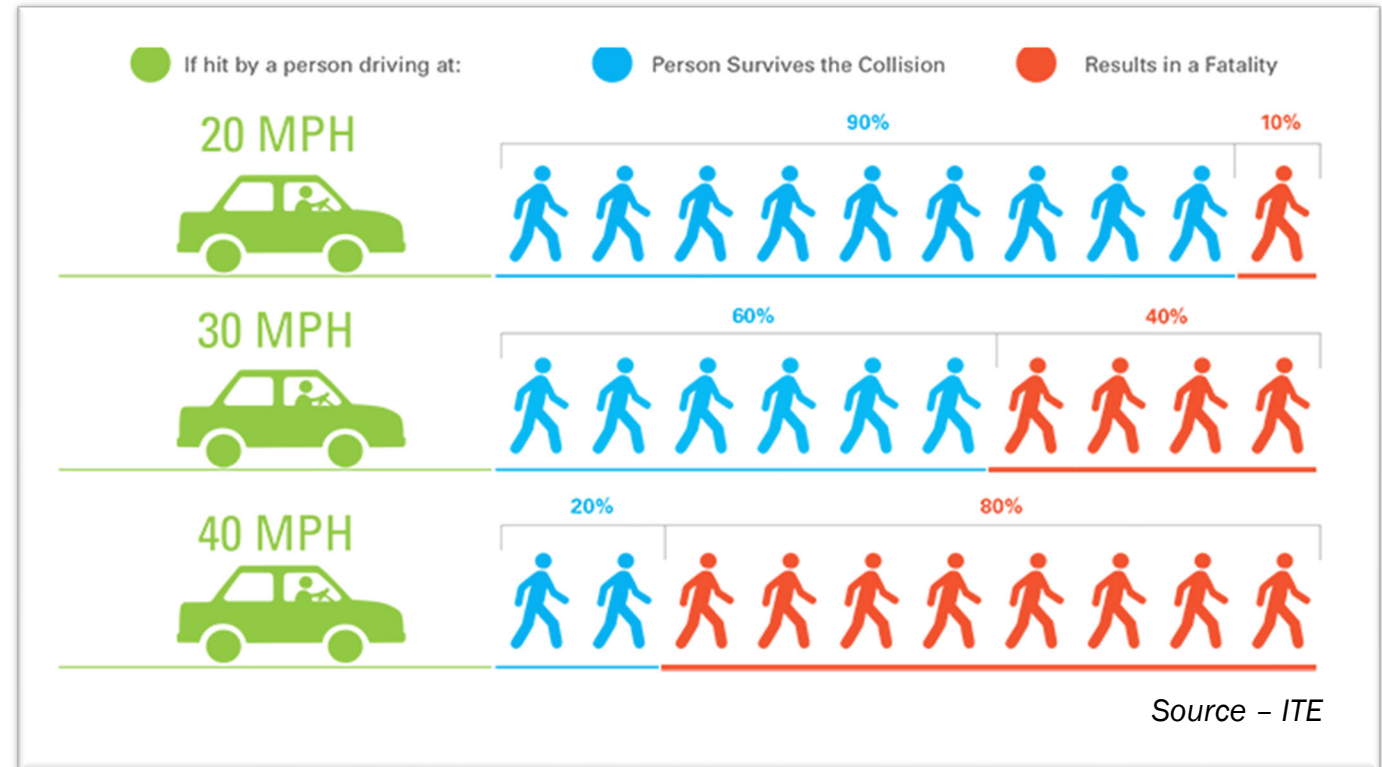
**Safer Speeds**



**Safer Roads**



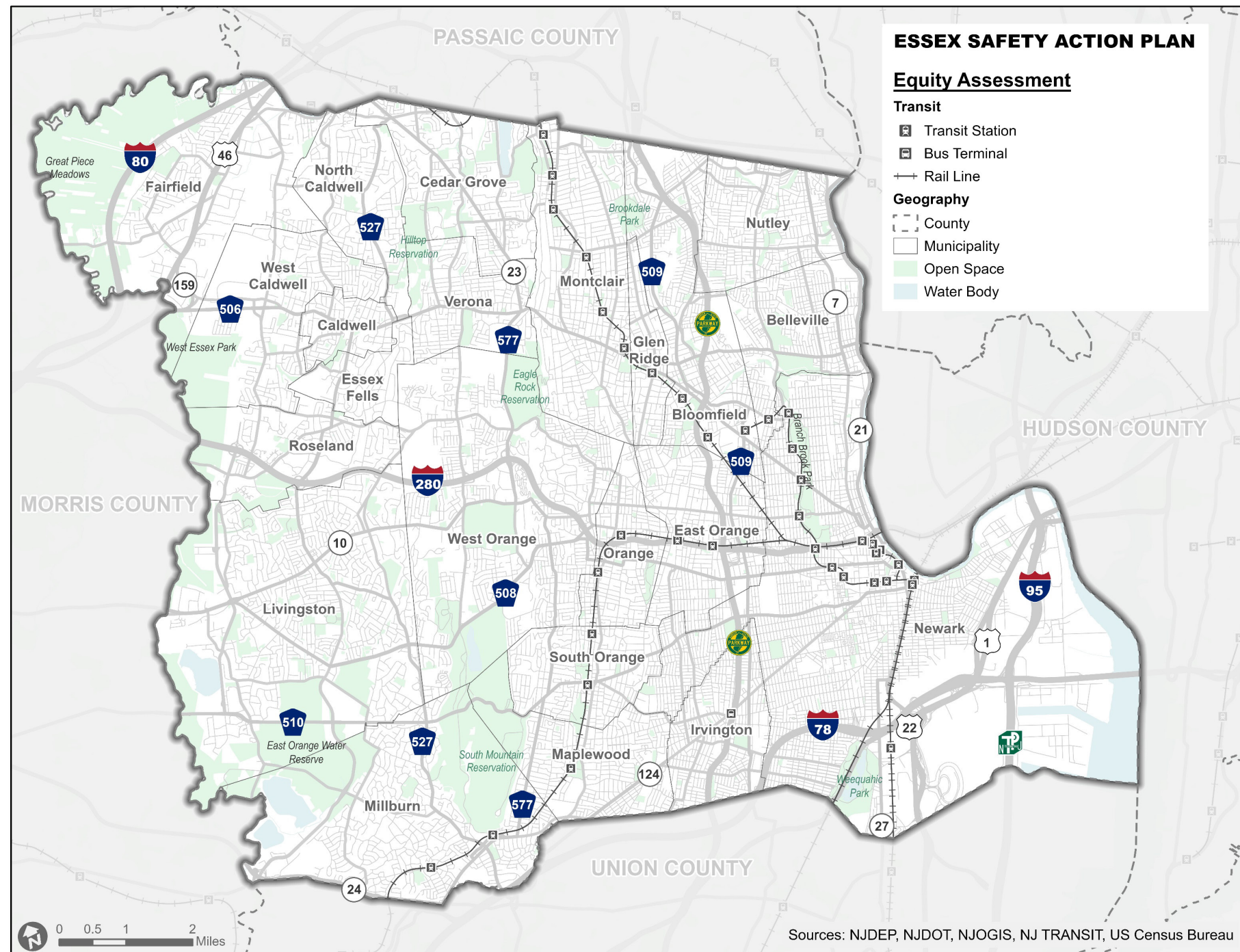
**Post-Crash Care**



The risk of death for pedestrians increases substantially as the impact speed increases. From 2013-2022, 22% (1,338) of New Jersey's roadway fatalities were speeding-related.

# Project Scope

- **Data Collection** – Systemwide
- **Project Selection** – Key Safety Corridors identified in the map



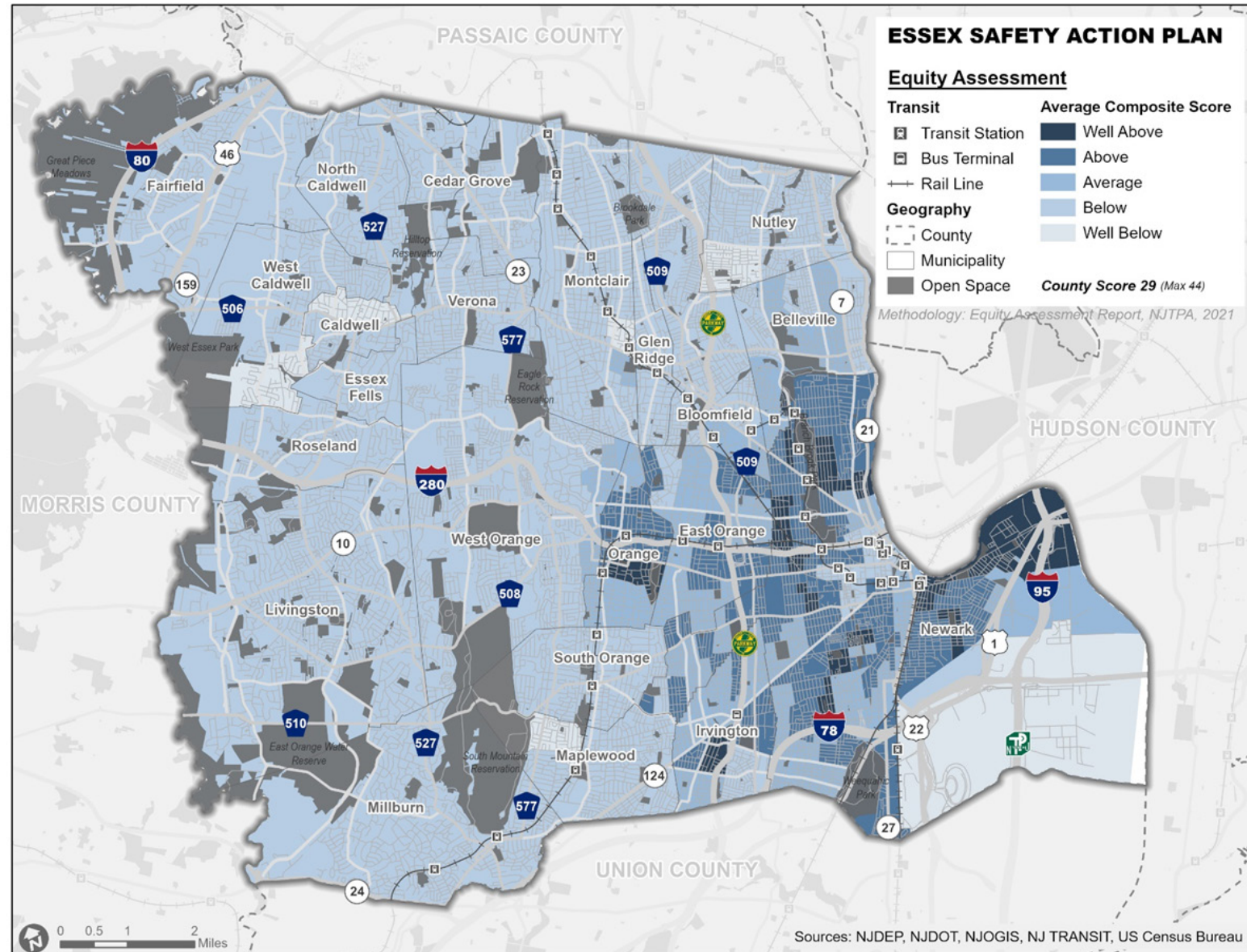


# SUMMARY OF INITIAL FINDINGS



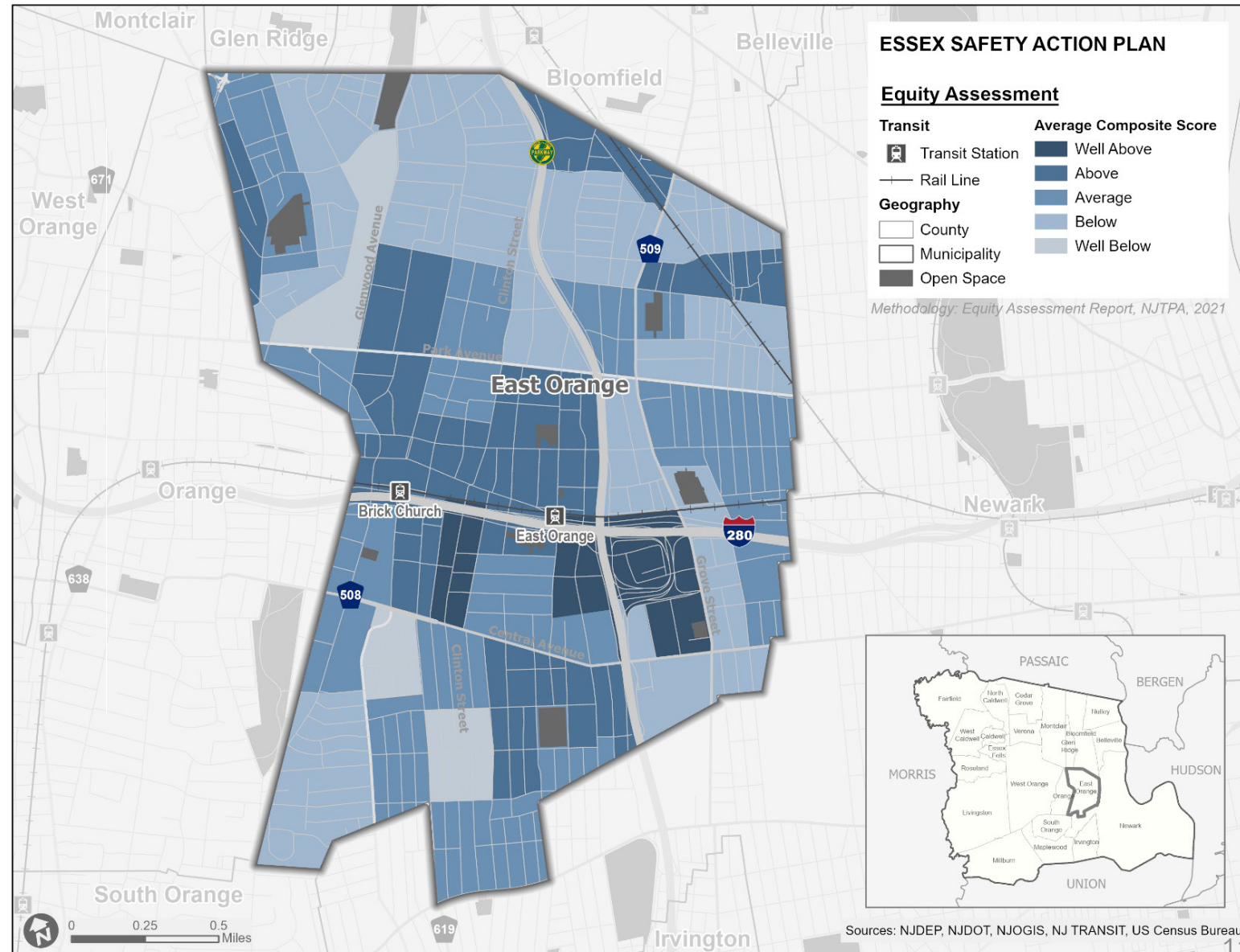
# Underserved Communities: Essex County

- Essex County's composite equity score ranks **first** out of NJTPA region's **13** counties
- Primarily in the eastern and heavily urbanized portions of Essex County
- Highest indicators: minority, lower-income, foreign-born, low English proficiency, and zero-car populations



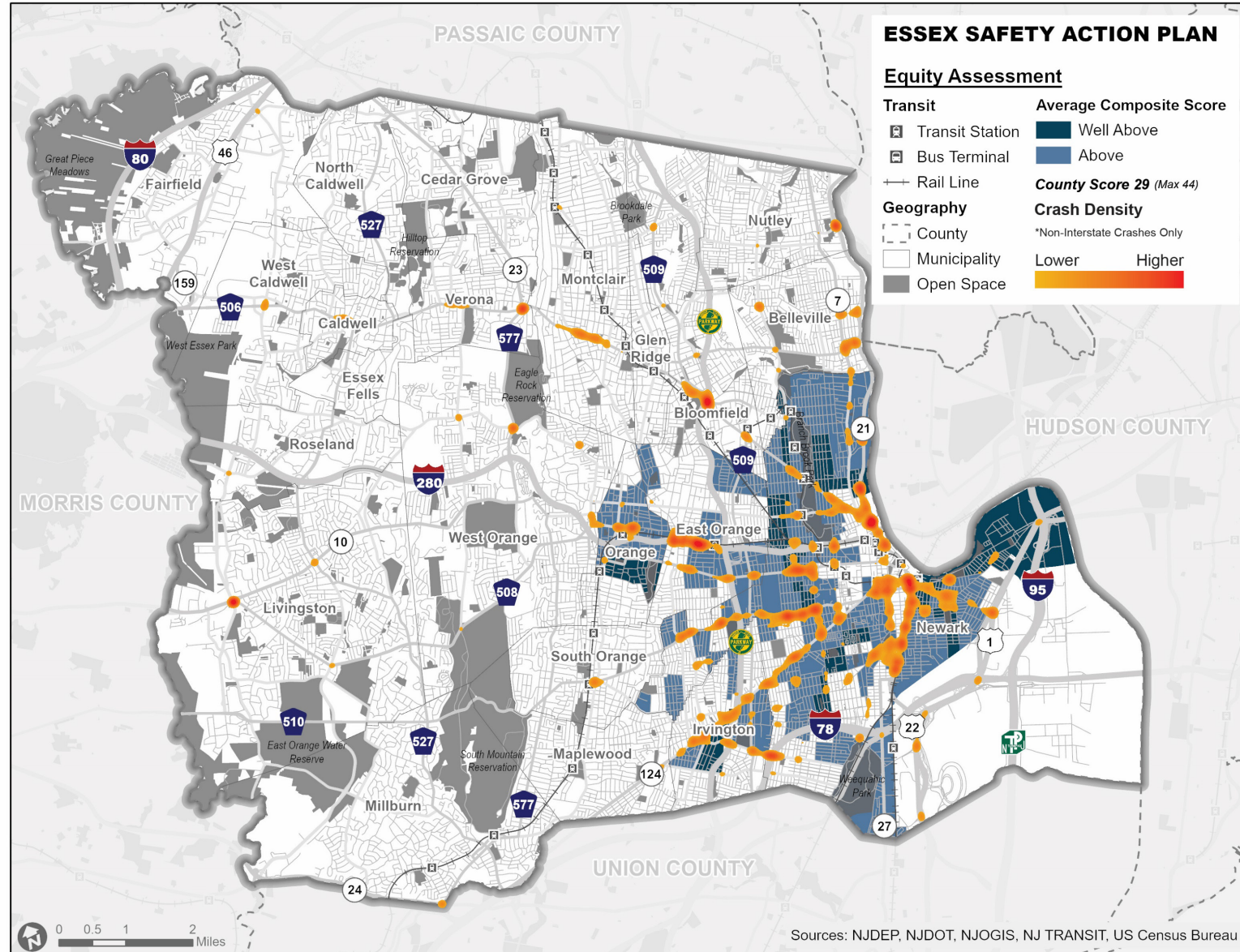
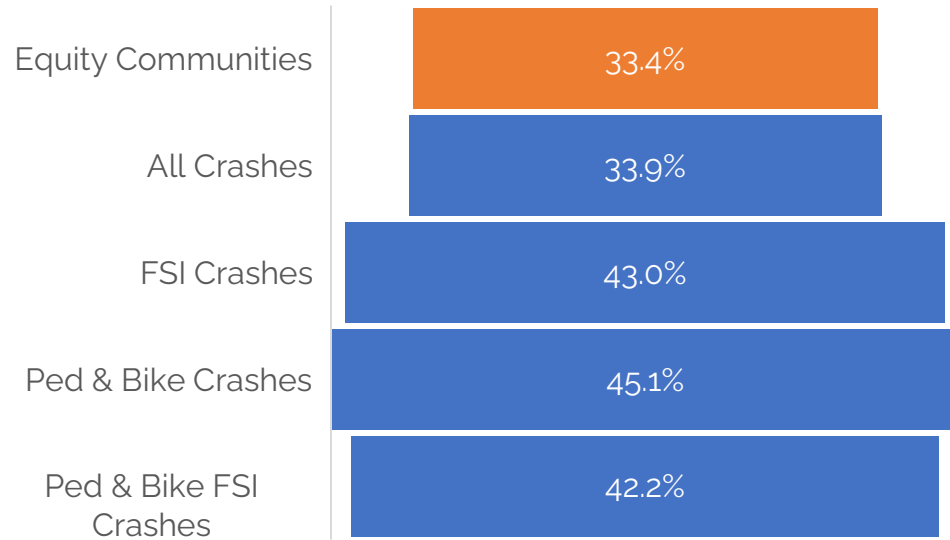
# Underserved Communities: City of East Orange

- Ranked **3rd of 22** Essex municipalities, below cities of Newark and Orange, comparable to Irvington
- Primarily concentrated around I-280 and the Morris & Essex rail line
- Highest indicators: minority, lower income, foreign born, low English proficiency, and zero-car populations



# Crash Hot Spots & Equity: Essex County 2018-2022

In Essex County these communities account for...



# Crash Data Overview – Essex County



All Crashes

96.2%

KSI Crashes

66.7%



3.1%

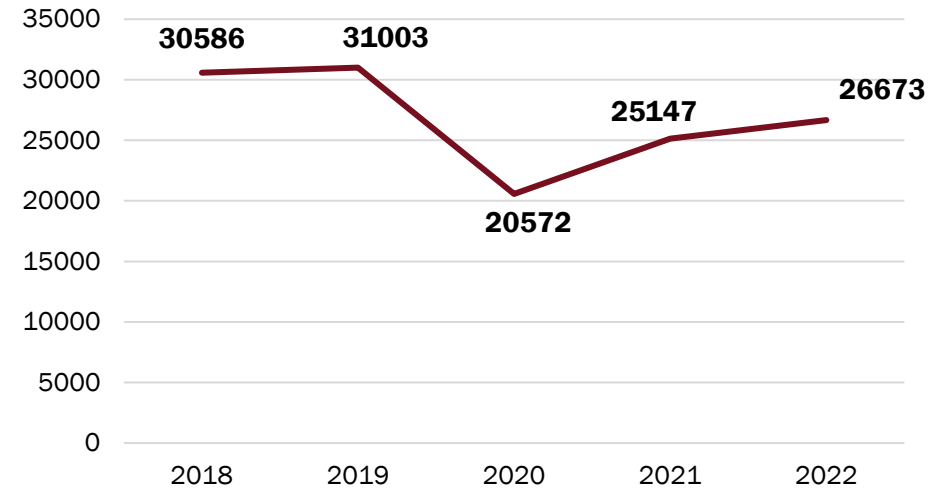
29.7%



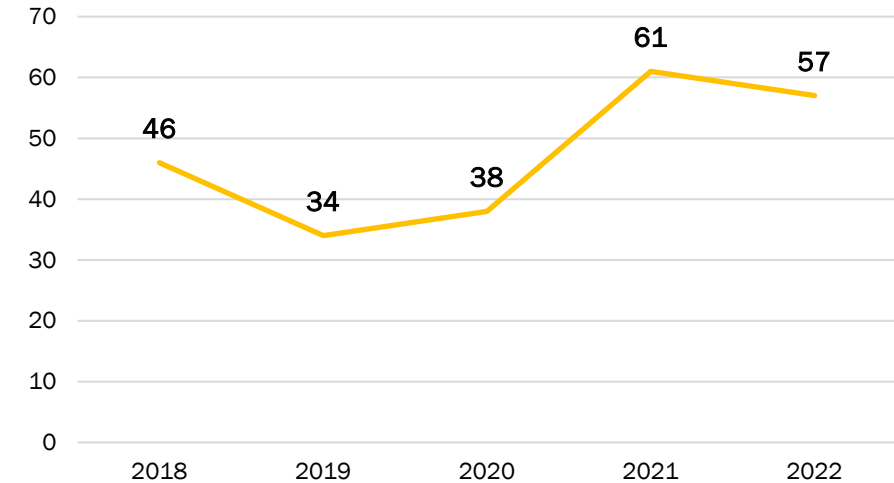
0.7%

3.6%

All Crashes 5 - Year Trend

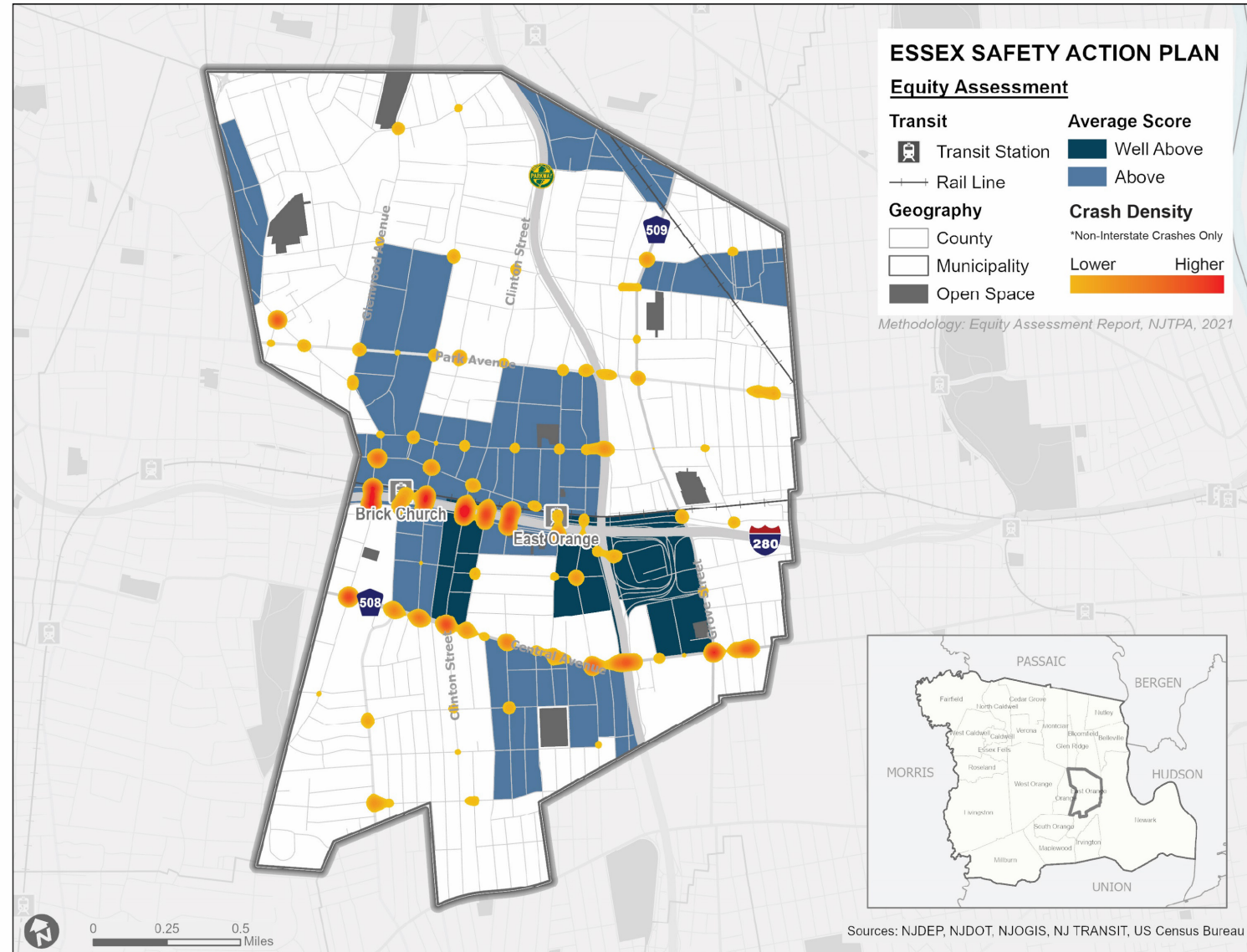
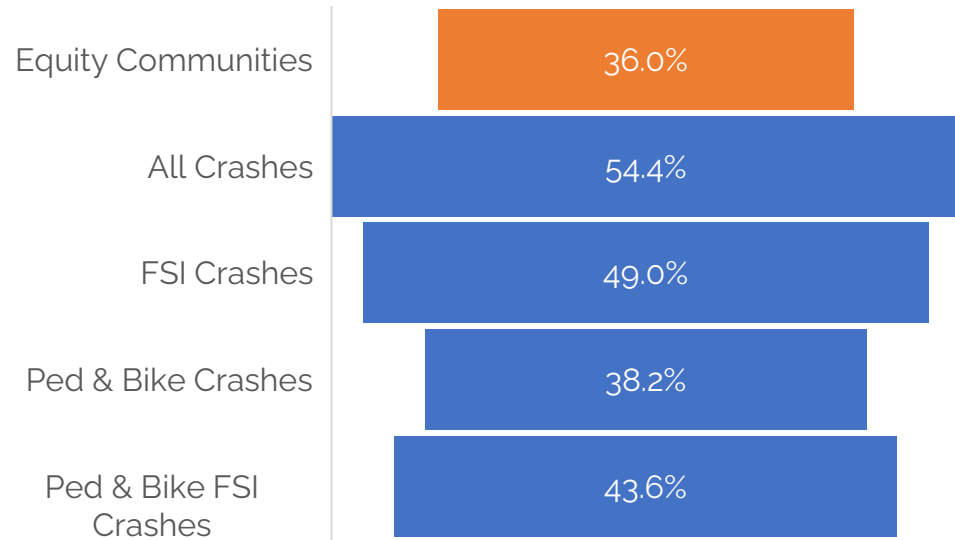


Fatal Crashes 5 - Year Trend



# Crash Hot Spots & Equity: East Orange 2018-2022

## In East Orange these communities account for...



# Crash Data Overview – City of East Orange



All Crashes

96.8%

KSI Crashes

65.2%



2.8%

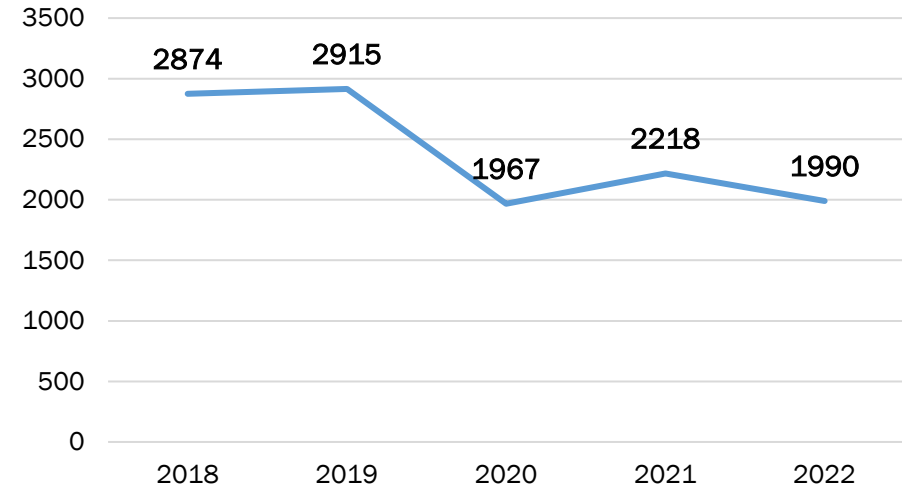
32.6%



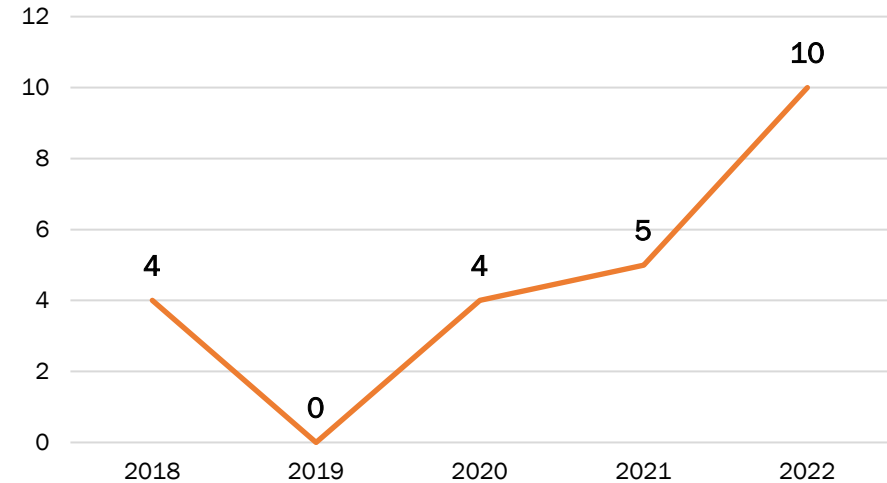
0.5%

2.2%

All Crashes 5 - Year Trend, East Orange



Fatal Crashes 5 - Year Trend, East Orange



# QUESTIONS?





# ESSEX

SAFE STREETS 4 ALL



We want to  
hear from YOU!

¡Queremos saber  
de USTED!

Queremos  
ouvir de VOCÊ!

Nou vle tande W!

**SURVEY & MAP**



**ENCUESTA Y MAPEE**

**PESQUISA E MAPEIE**

**SONDAJ AK KAT**

Take The Survey Here | Complete la Encuesta Aquí | Responda à Pesquisa Aqui | Reponn Sondaj la

<https://bit.ly/essex-survey>



## Online Survey & Map



Help spread the word?

# Discussion

- **What's working?**
- **What could be improved?**
- **Vision for the future...**

***What's your vision for getting around Essex County safely in the future?***

